

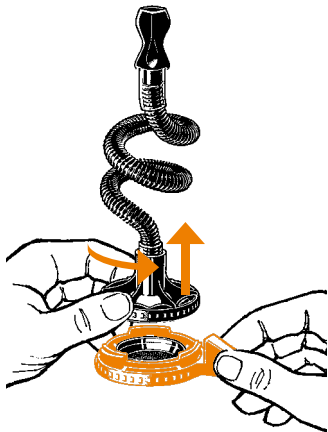


Quick Start Manual PLENTY Vaporizer

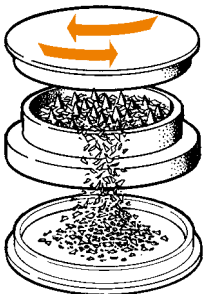


www.storz-bickel.com

1. Open Filling Chamber



2. Grind materials

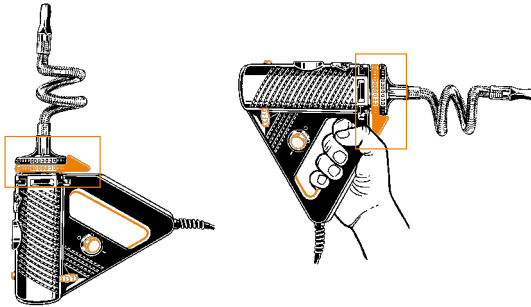


3. Fill Filling Chamber

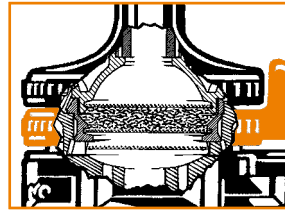


Always fill the Filling Chamber completely up to the upper edge

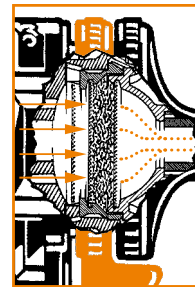
Correct Filling



correct

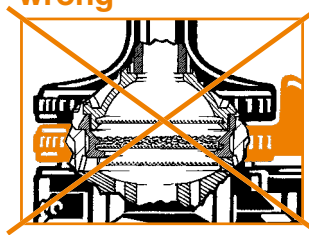


Completely filled Filling Chamber

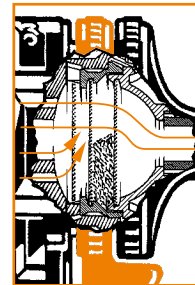


vapor

wrong

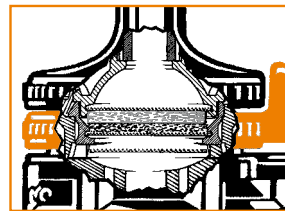


Filling Chamber only partially filled

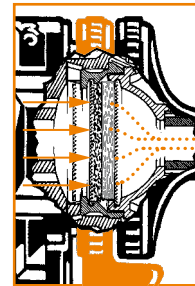


hot air

correct

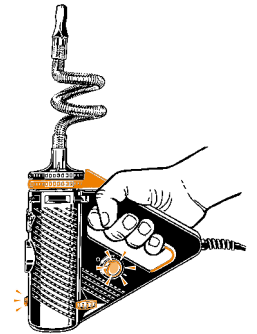


Filling Chamber only partially filled, with Liquid Pad placed on top

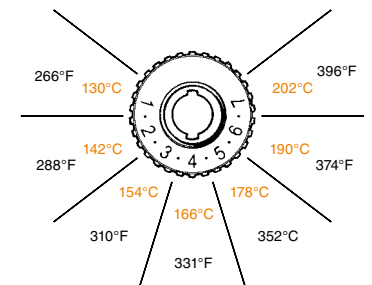


vapor

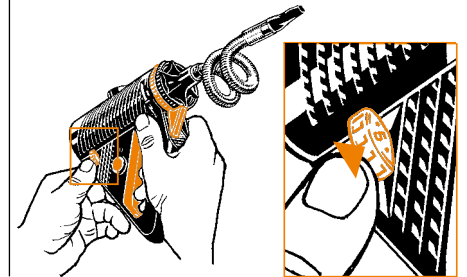
4. Switch on the device (orange power switch) and press auto off release handle.



5. Vaporization temperature scale



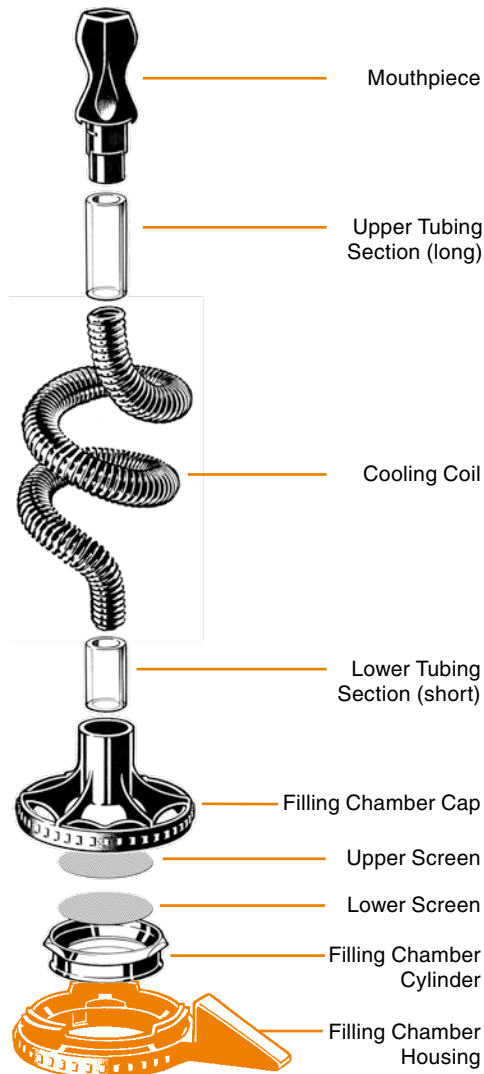
6. Choose temperature



Refer to the Instructions for Use for important safety and user advice. Do not operate the device without first reading and understanding the Instructions for Use!



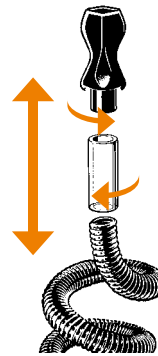
1. Expanded view of the PLENTY Vaporization Unit



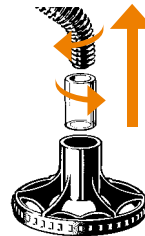
Free Shipping Worldwide



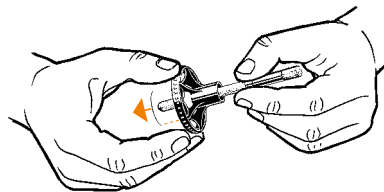
2. Pull the Mouthpiece away from the Cooling Coil



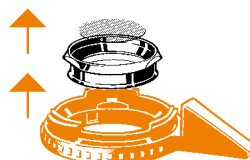
3. Pull the Cooling Coil out of the Filling Chamber Cap



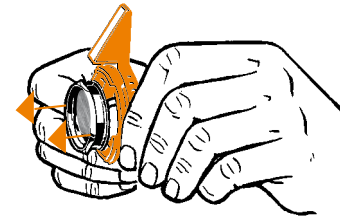
4. Push out the Upper Screen with help of the Cleaning Brush



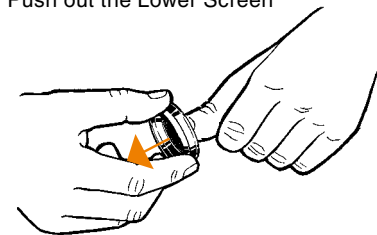
5. Disassembling the Filling Chamber



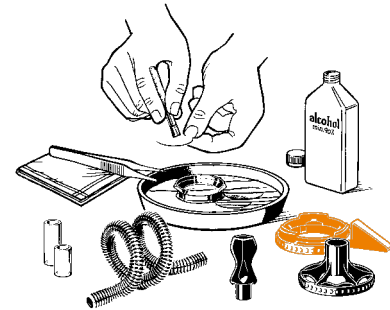
6. Push out the Filling Chamber Cylinder



7. Push out the Lower Screen



8. Manual cleaning with alcohol (min. 90%) or dishwashing soap



9. Filling Chamber Cylinder, Filling Chamber Housing, positioning surfaces

